

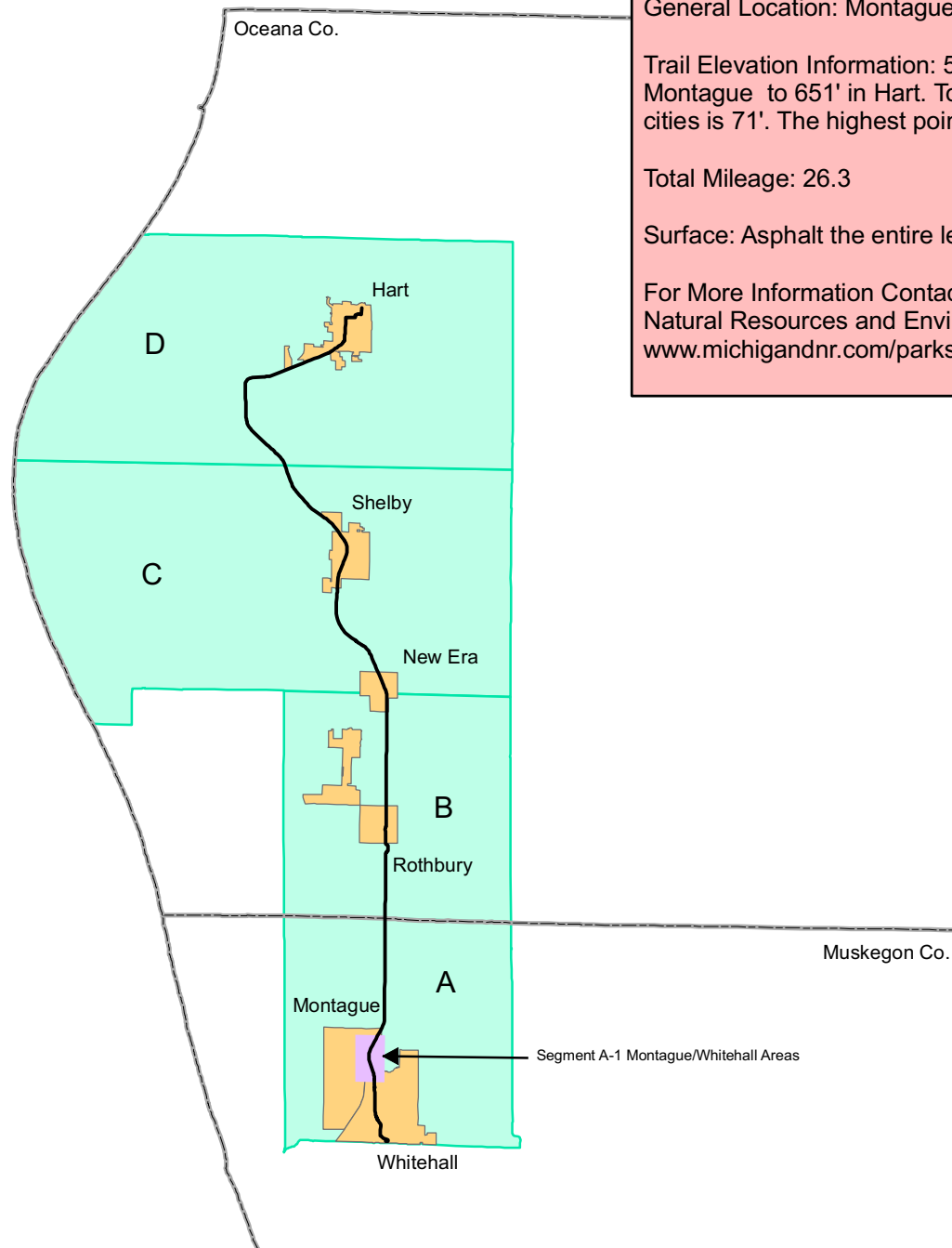
Hart-Montague Bicycle Trail State Park - Information and Index Map

Segment A - 6.3 trail miles

Segment B - 6.0 trail miles

Segment C - 7.2 trail miles

Segment D - 6.8 trail miles



General Location: Montague/Whitehall to Hart

Trail Elevation Information: 580' near the White River in Montague to 651' in Hart. Total elevation change between the cities is 71'. The highest point on the trail is in Shelby at 819'

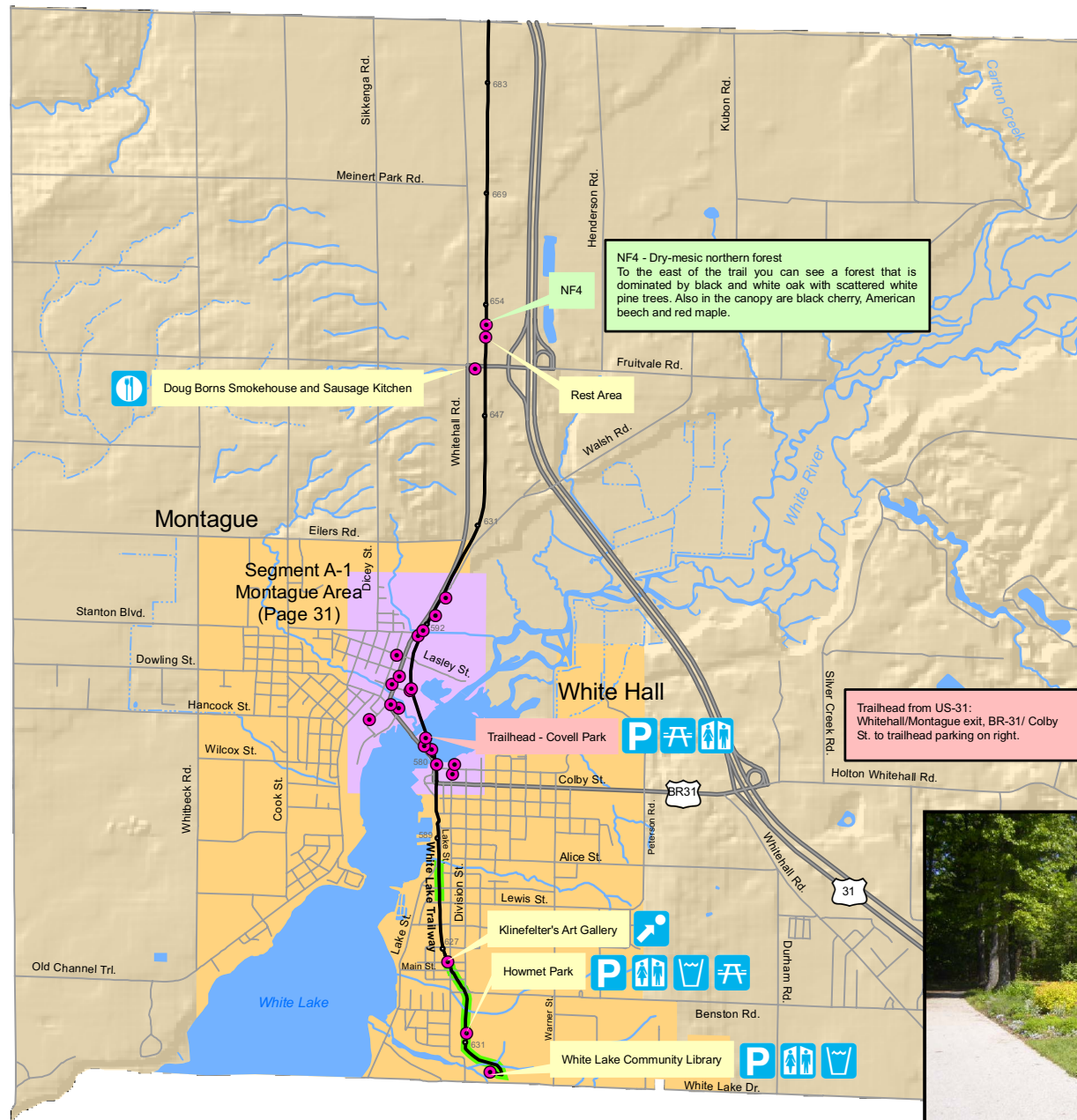
Total Mileage: 26.3

Surface: Asphalt the entire length

For More Information Contact: The Michigan Department of Natural Resources and Environment at www.michigandnr.com/parksandtrails



Segment A - White Hall to Montague Area

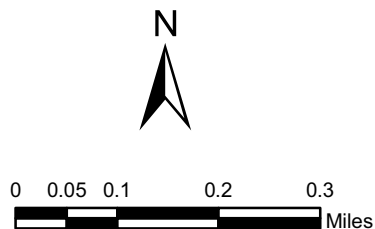
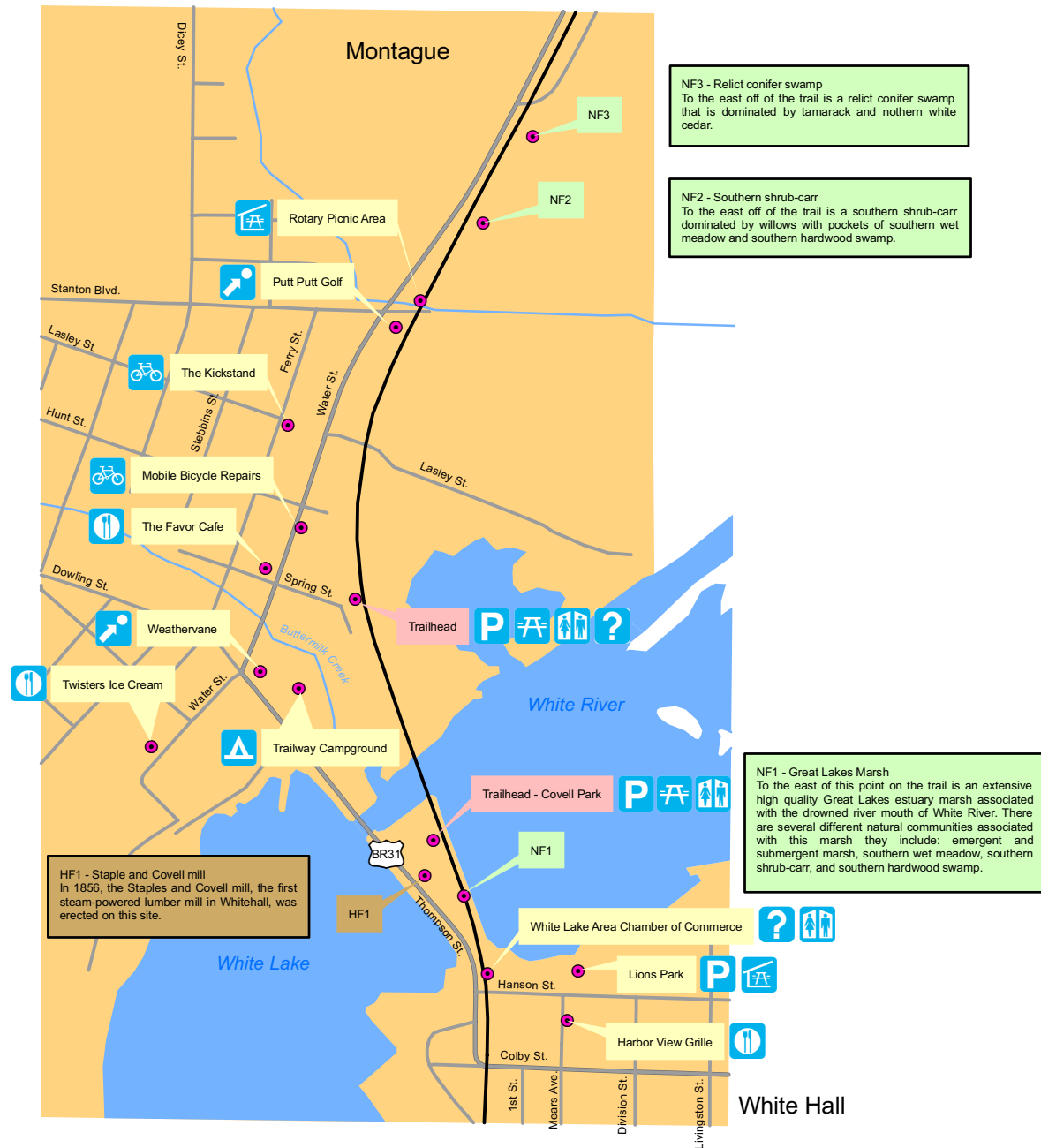
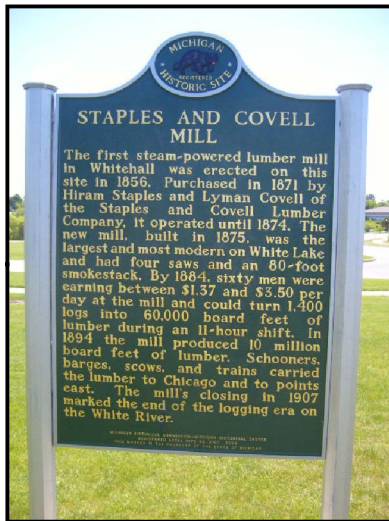


Howmet Park

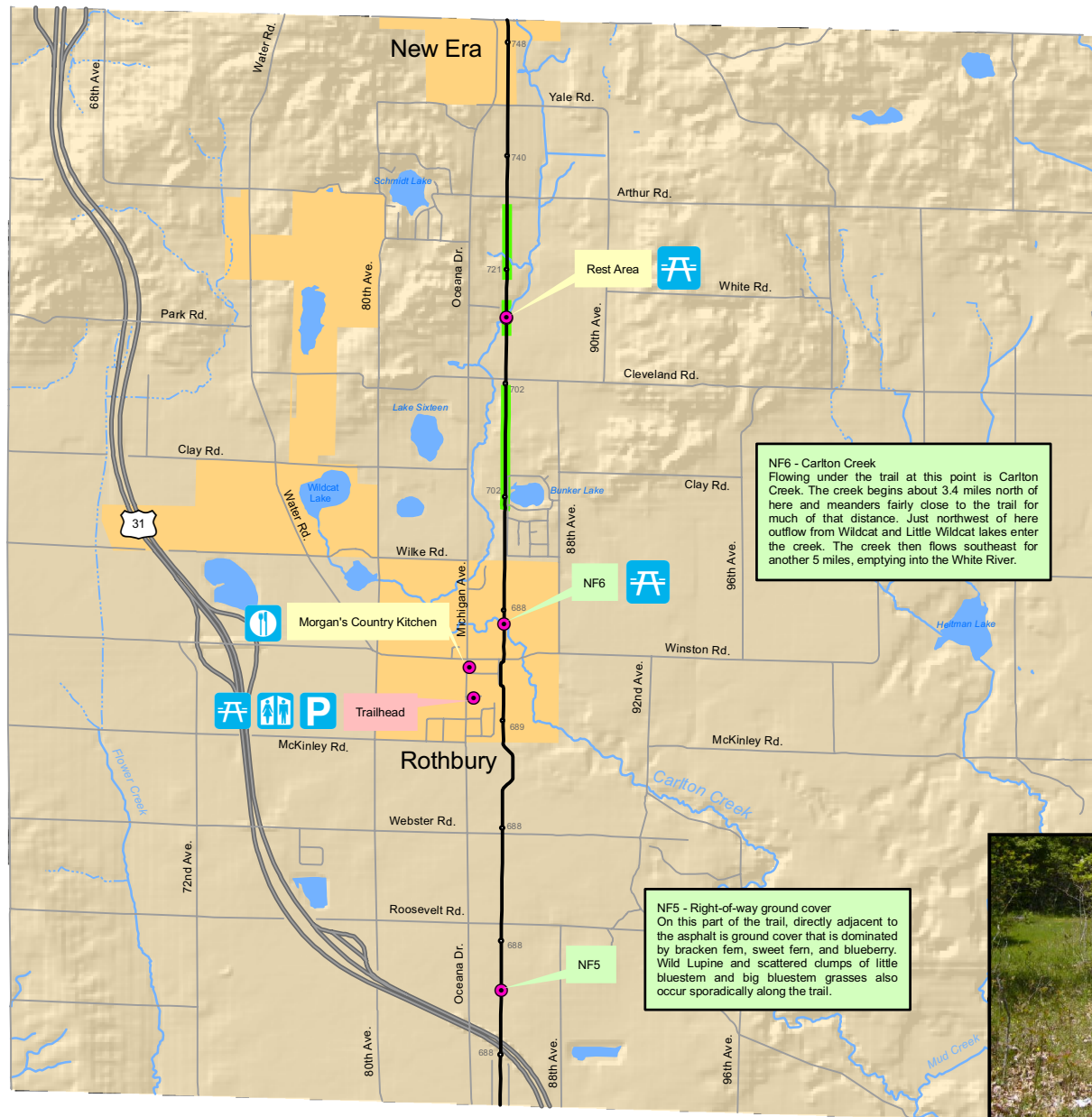


Segment A-1 Montague and Whitehall Areas

HF1 - Staple and Covell Mill



Segment B - Rothbury Area to New Era

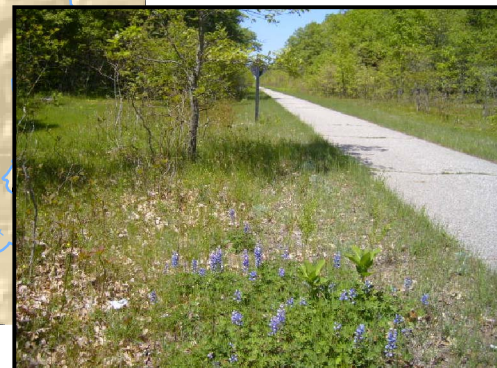


NF6 - Carlton Creek
Flowing under the trail at this point is Carlton Creek. The creek begins about 3.4 miles north of here and meanders fairly close to the trail for much of that distance. Just northwest of here outflow from Wildcat and Little Wildcat lakes enter the creek. The creek then flows southeast for another 5 miles, emptying into the White River.

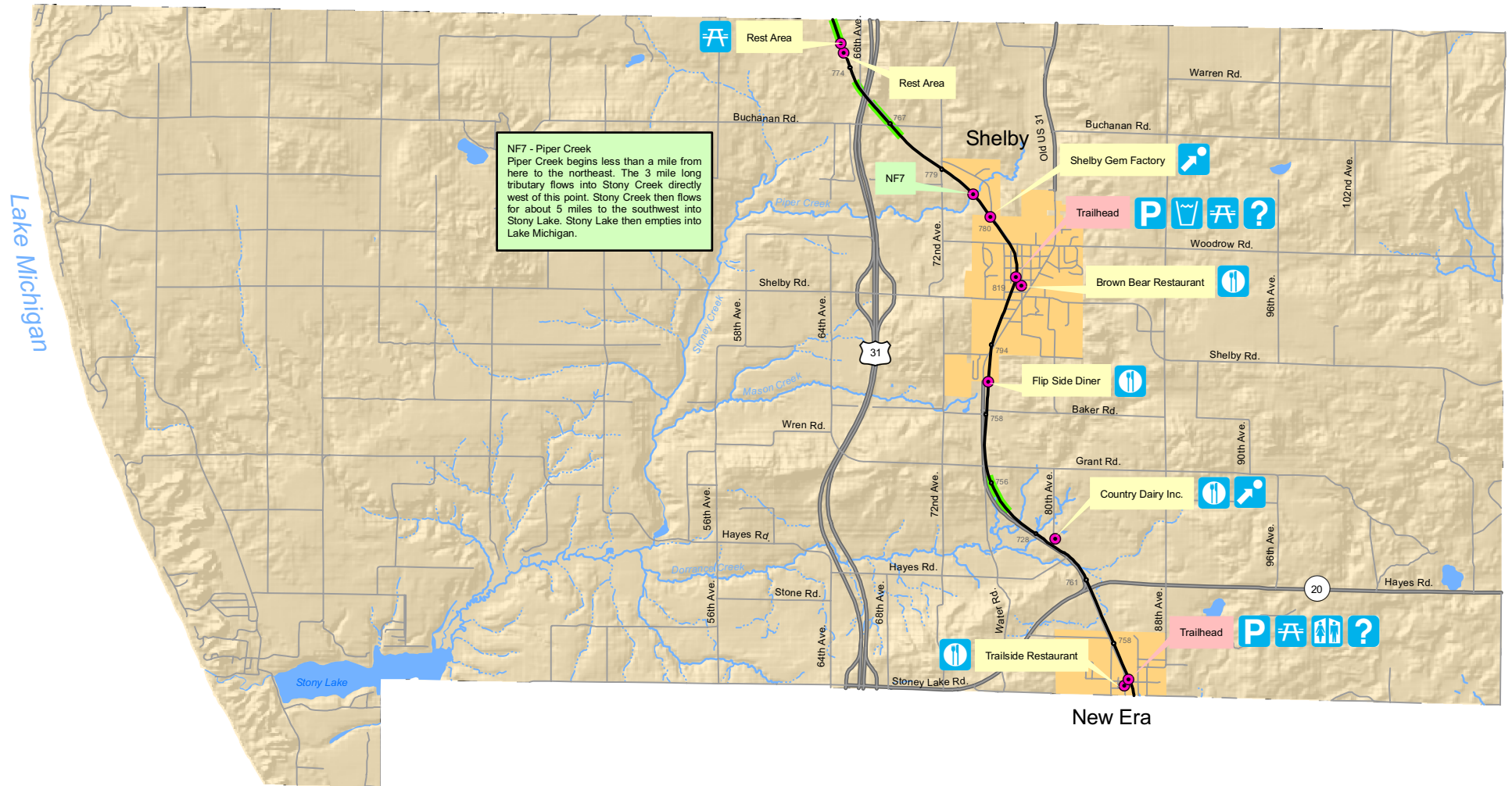
NF5 - Right-of-way ground cover
On this part of the trail, directly adjacent to the asphalt is ground cover that is dominated by bracken fern, sweet fern, and blueberry. Wild Lupine and scattered clumps of little bluestem and big bluestem grasses also occur sporadically along the trail.



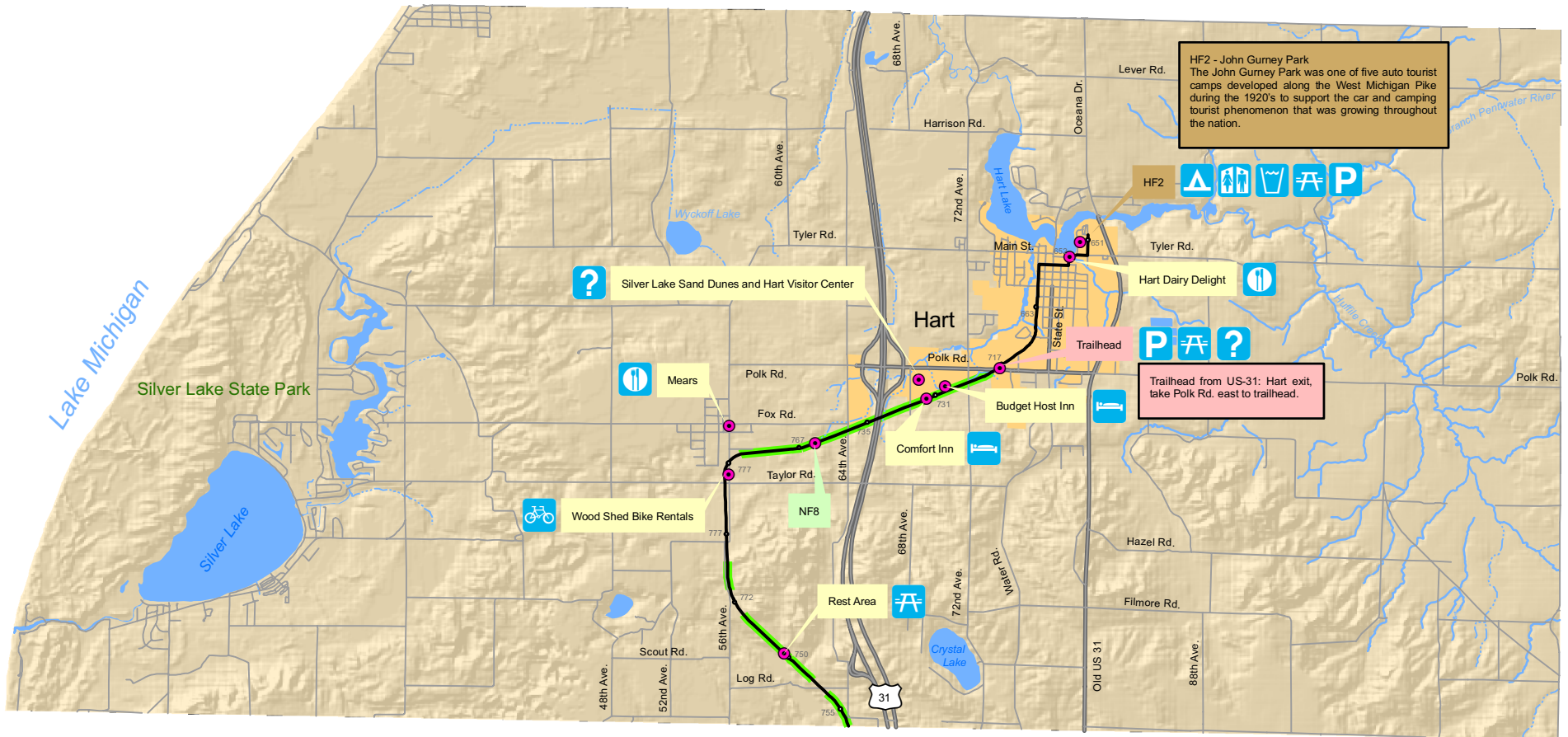
NF5 - Wild Lupine along the trail



Segment C - New Era to Shelby Area



Segment D - Shelby Area to Hart



NF8 - Mesic southern forest
Directly south and east of the trail at this point is a 15 acre woodlot of mesic southern forest. American beech and sugar maple dominate the canopy. Spring wildflowers can be seen in this woodlot, some that have been identified include: wild ginger, white avens, star false solomon's-seal, bloodroot, wild sarsaparilla, and may-apple. (Note: this is private property)

NF8 - Wild ginger

