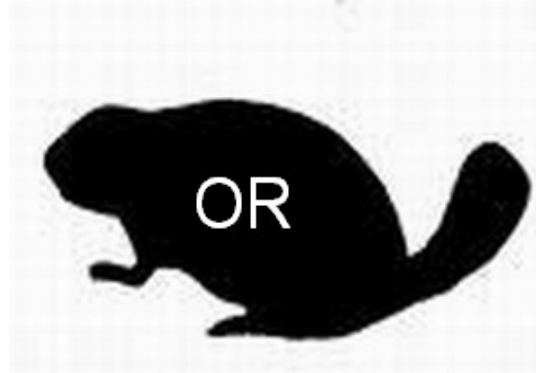


Welcome to the Ashmun Creek Nature Trail, where you may experience a beautiful, functioning forest within the city limits. The trail is about 2 miles (3.2 km) long with a minimum elevation of 649 ft. and a max elevation of 705 ft. and is marked with signs explaining how this forest functions. Please plan on taking at least one hour for your hike because some areas are steep and unimproved.

You and your family will enjoy the returning birds and blossoms in the spring, the wildlife in the summer, and the changing colors in the autumn. You are also encouraged to visit in the winter – it is a wonderful place to snowshoe; however, if you do, look out for the many snowmobiles that also use the area.

Special thanks to  
The City of Sault Ste. Marie  
and  
The Michigan Department  
of Natural Resources

For more information,  
please visit our website  
[www.lssu.edu/biology](http://www.lssu.edu/biology)



contact the Biology Department  
at  
The Lake Superior State University  
650 West Easterday Ave.  
Sault Ste. Marie, MI 49783  
Phone #: 906-635-2267

In addition, you may also enjoy:

# *Ashmun Creek Nature Trail*



**“Come on over and see me”**

**in**

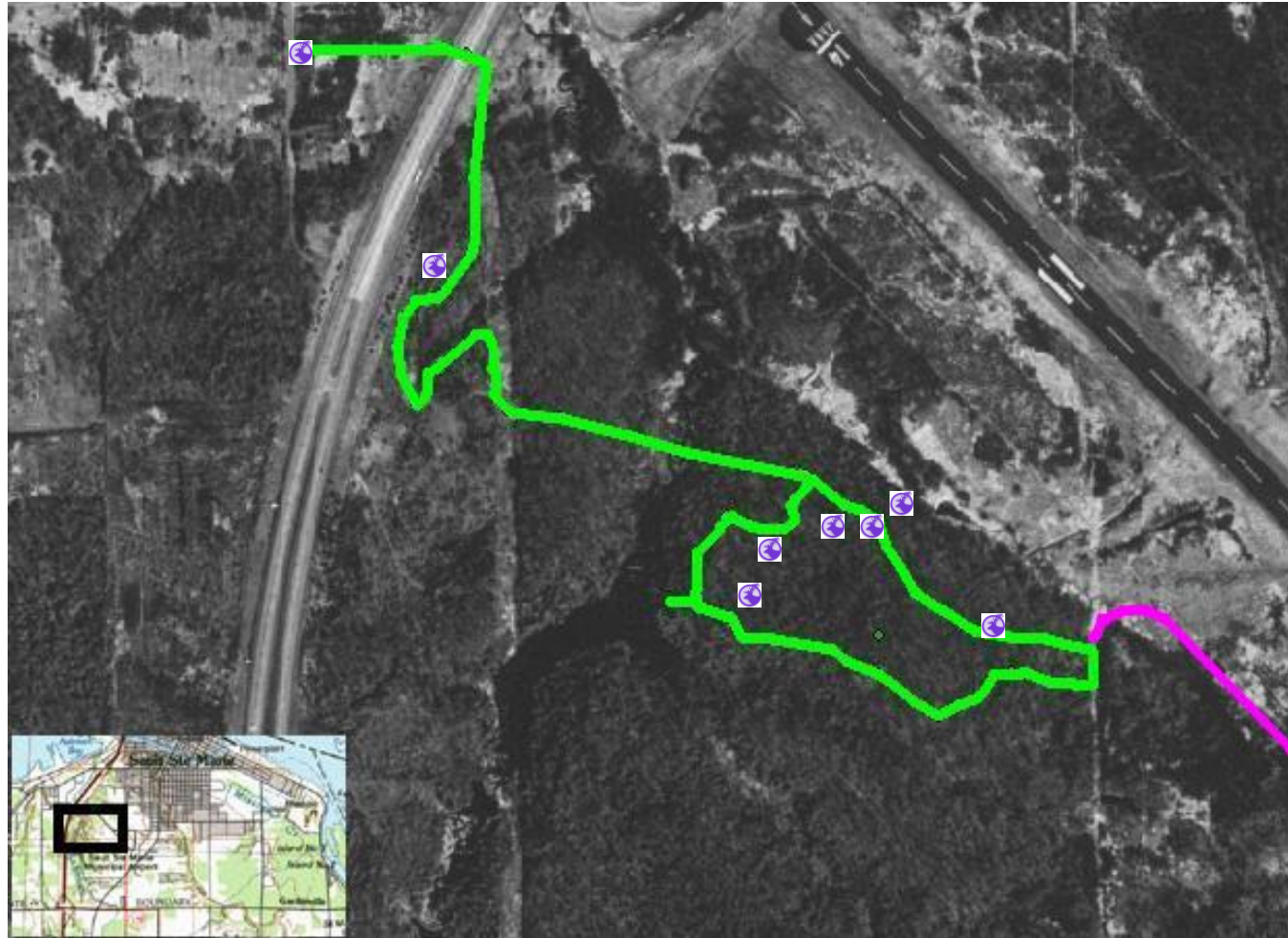
**Sault Ste. Marie, Michigan**

During your hike, you can appreciate the natural beauty while learning about

- 🌍 Welcome to Ashmun Creek
- 🌍 Early Forest Succession,
- 🌍 Forest Dynamics,
- 🌍 Coarse Woody Debris,
- 🌍 Riparian Buffers,
- 🌍 Wildlife,
- 🌍 Vernal Pools,
- 🌍 Biodiversity,

and how these are important to the Sault Ste. Marie area.

The 🌍 denote the signs' locations.



### 11<sup>th</sup> St. parking:

From Exit 394 of I-75 N, turn left on Easterday Ave., continue to W. 12<sup>th</sup> St. and turn left at the blinking light. Take W. 12<sup>th</sup> St. to W. 8<sup>th</sup> St. and turn left, follow the curve onto 11<sup>th</sup> St. W., and park along side the road across from the trail sign (upper left end of the green line).

### Quality Inn parking:

From Exit 392 of I-75 N, continue on the I-75 Business Spur for about 1 mile, and Quality Inn will be on your left. The trailhead is located in the northeast corner of the parking lot. Though easier to locate, this parking location is farther away from the first informational sign, and it is a temporary trailhead (Trail enters along the purple line route).

