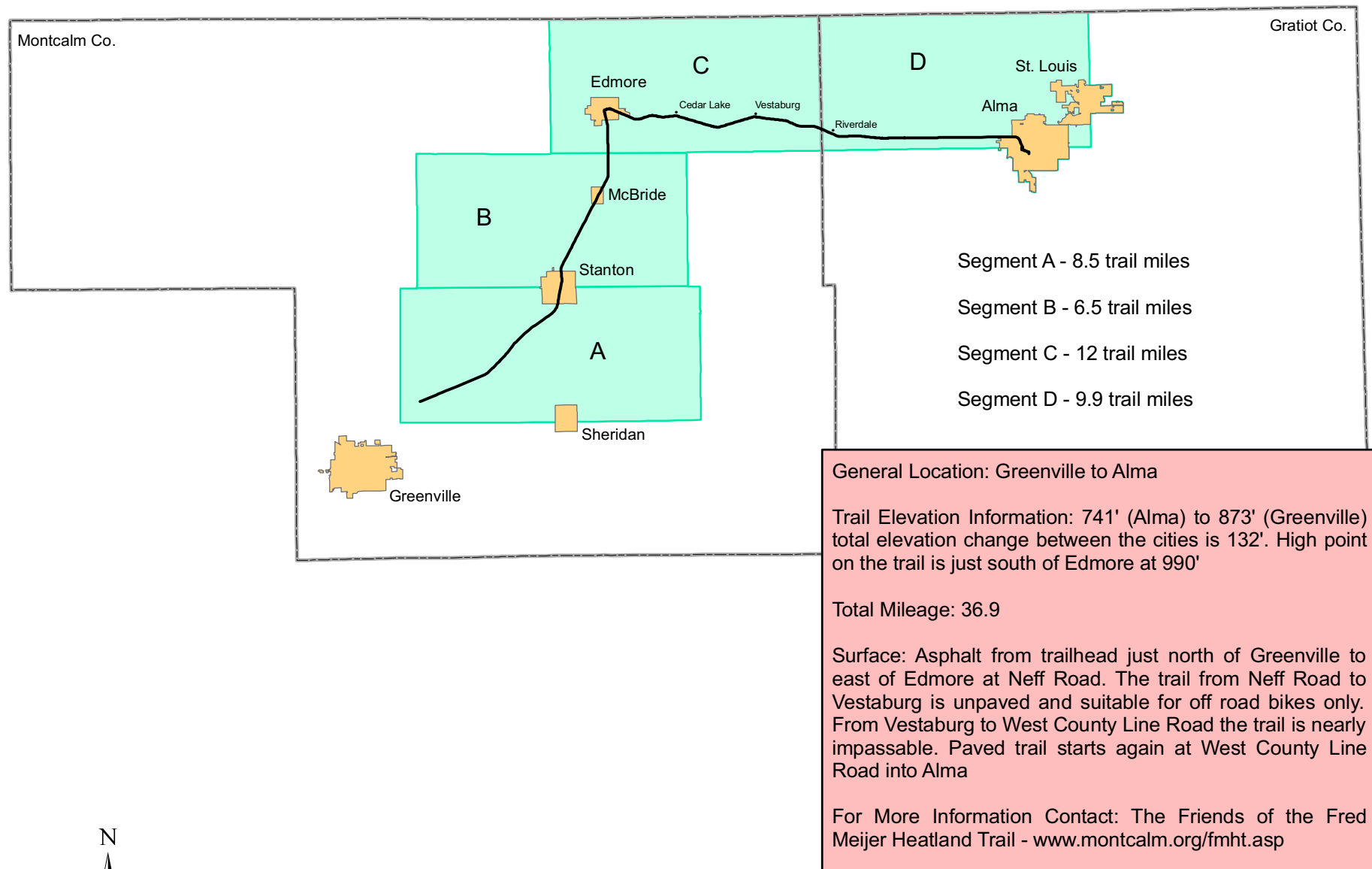


Fred Meijer Heartland Trail – Information and Index Map



Segment A - Greenville Area to Stanton

NF3 - Southern wet meadow with spotted Joe-pye-weed



NF3 - Southern wet meadow and southern shrub-carr
To the north of the trail you can see a 13.5 acre southern wet meadow. The wetland is visible for about .3 miles along the trail. In the summer, you can notice an extensive display of flowering spotted Joe-pye-weed, a dominate wetland forb. A southern shrub-carr community can also be seen in the wetland, dominated by woody shrubs such as dogwoods and willows.

Buildings at Hertige Village

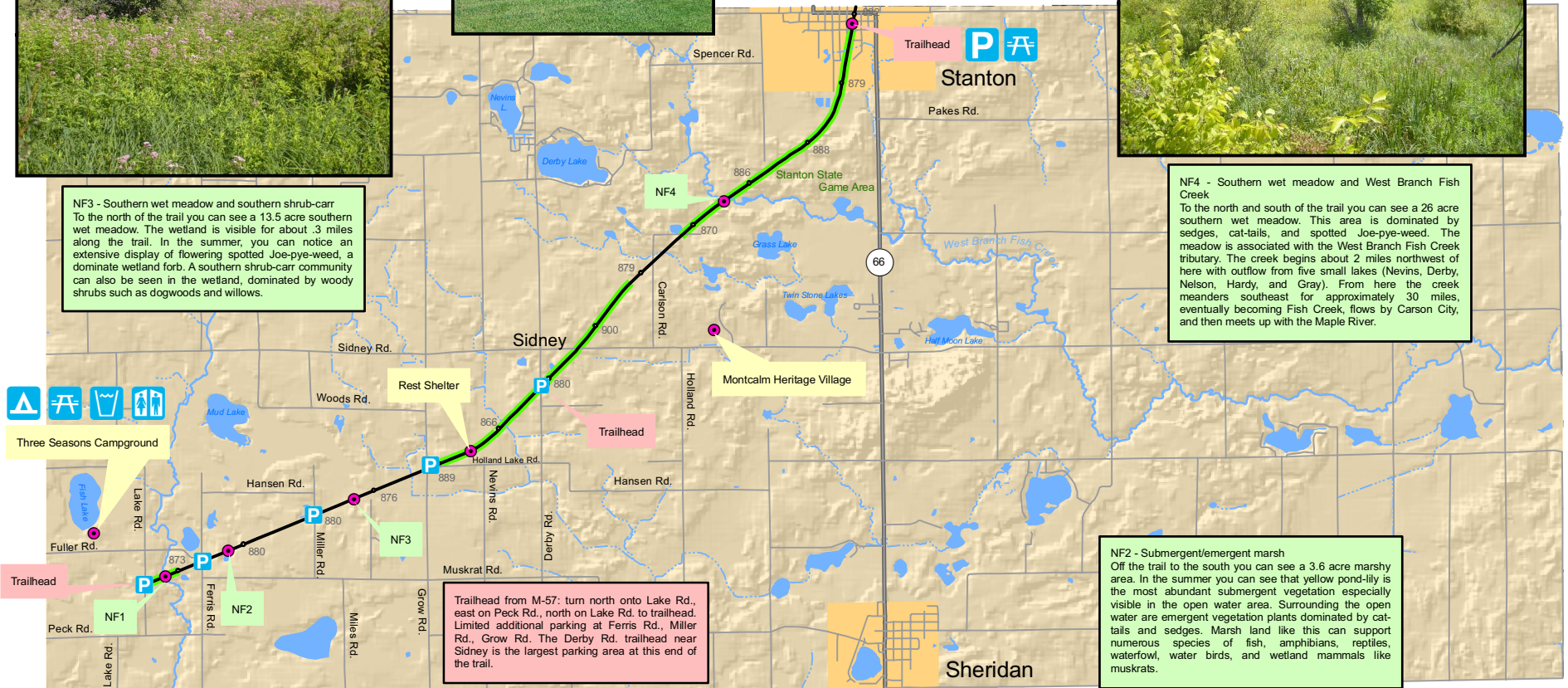


Montcalm Heritage Village
The village, on the campus of Montcalm Community College, has 26 historical buildings and hundreds of artifacts from the local area that gives the visitor a glimpse of life in Michigan in the early 20th century.

NF4 - Southern wet meadow and West Branch Fish Creek



NF4 - Southern wet meadow and West Branch Fish Creek
To the north and south of the trail you can see a 26 acre southern wet meadow. This area is dominated by sedges, cat-tails, and spotted Joe-pye-weed. The meadow is associated with the West Branch Fish Creek tributary. The creek begins about 2 miles northwest of here with outflow from five small lakes (Nevins, Derby, Nelson, Hardy, and Gray). From here the creek meanders southeast for approximately 30 miles, eventually becoming Fish Creek, flows by Carson City, and then meets up with the Maple River.



NF2 - Submergent/emergent marsh
Off the trail to the south you can see a 3.6 acre marshy area. In the summer you can see that yellow pond-lily is the most abundant submergent vegetation especially visible in the open water area. Surrounding the open water are emergent vegetation plants dominated by cat-tails and sedges. Marsh land like this can support numerous species of fish, amphibians, reptiles, waterfowl, water birds, and wetland mammals like muskrats.

Trailhead from M-91: turn east onto Peck Rd., north onto Lake Rd to trailhead. Very limited parking available at this trailhead.

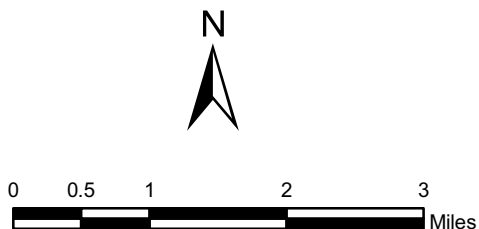
NF1 - Dickerson Creek
Dickerson Creek flows under this bridge. The Dickerson Creek watershed drains 76 square miles of mostly agricultural land. The watershed is approximately 15 miles long (north to south) and 8 miles wide. The creek begins about 8 miles north of this point on the trail and then flows another 15 miles to the south where it empties into the Flat River. The forest along the creek here is a floodplain forest that is typically dominated by silver maple, green ash, black willow, and eastern cottonwood.



NF1 - Dickerson Creek

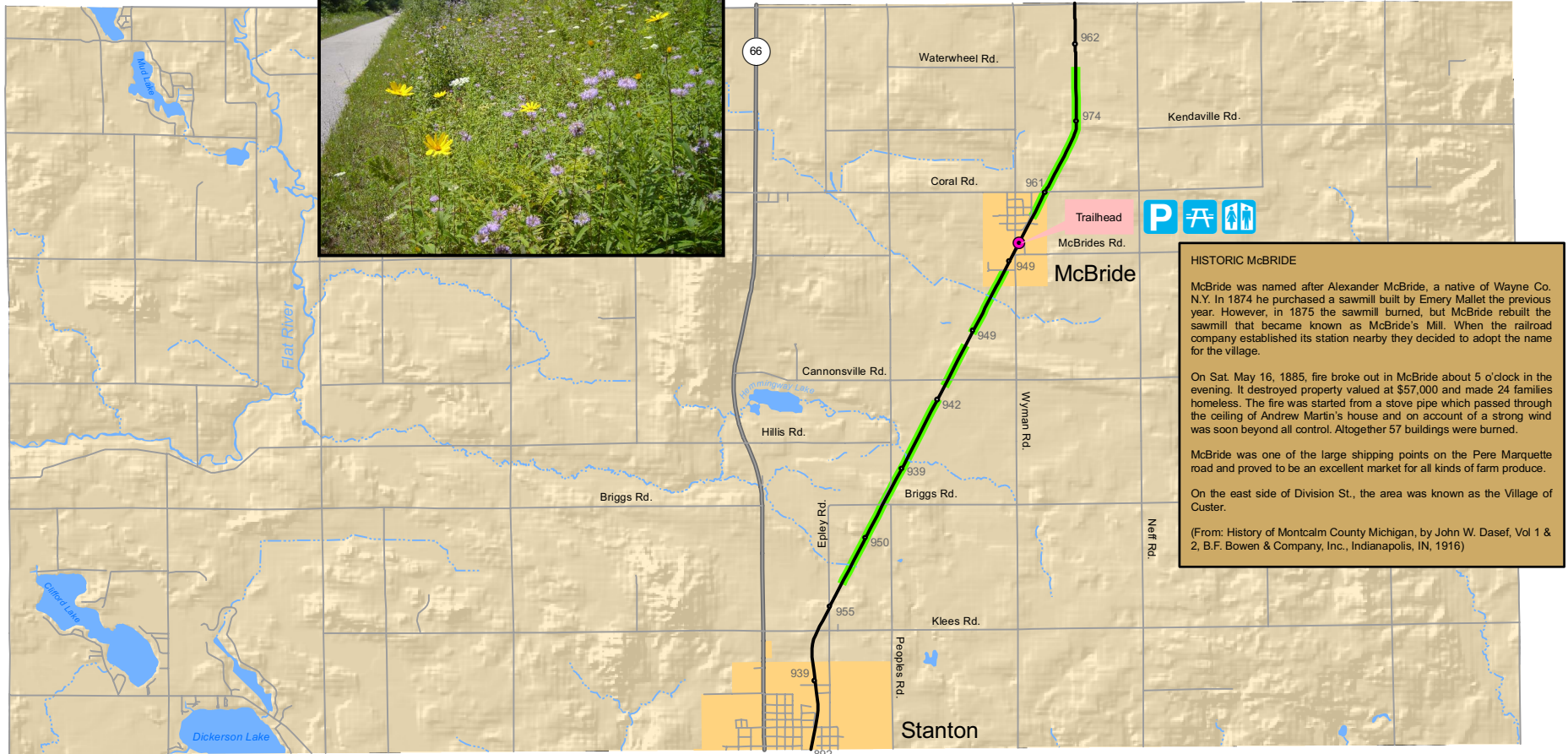


NF2 - Submergent/emergent marsh



Segment B – Stanton to McBride Area

Summer wildflowers along the trail

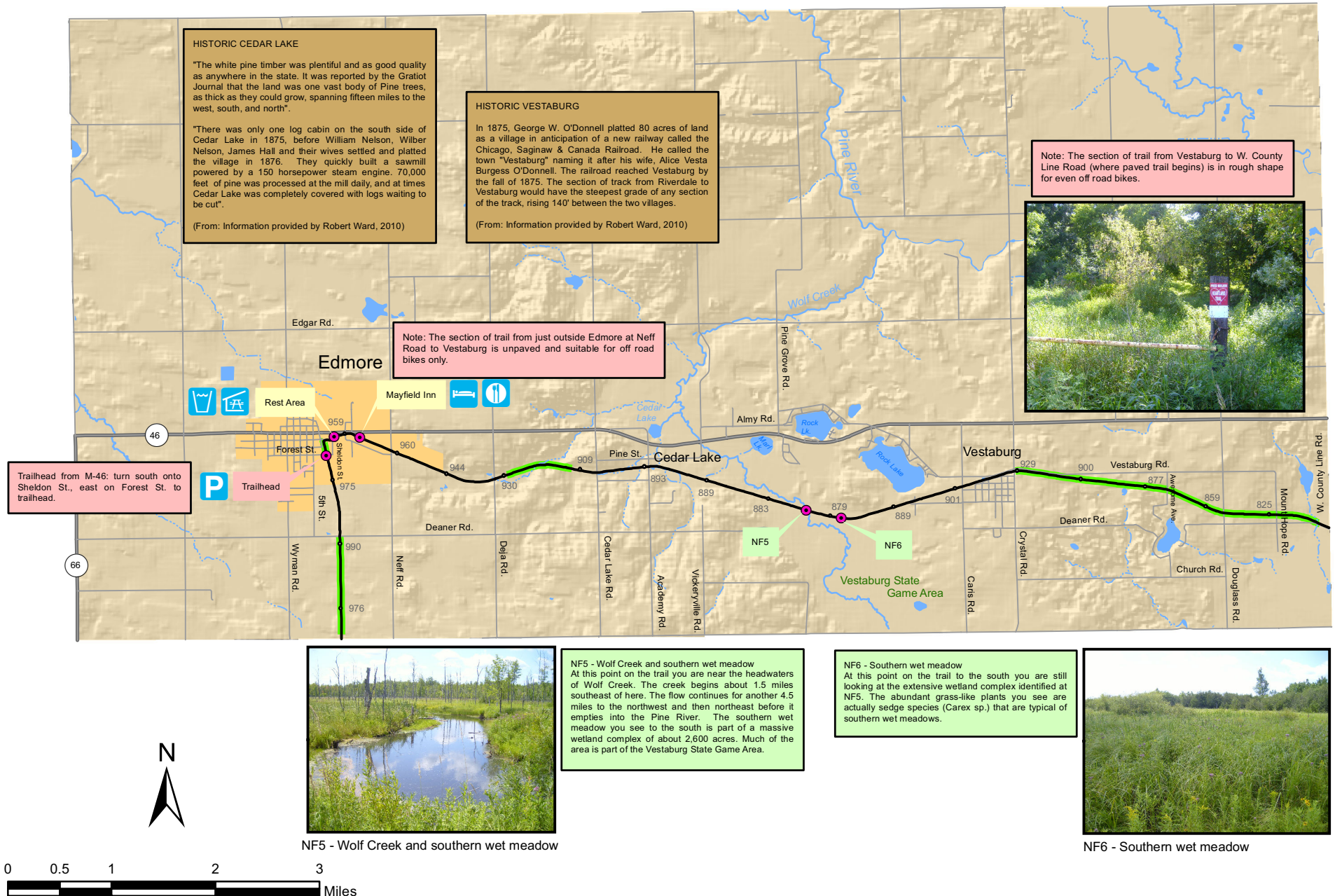


0 0.5 1 2 3 Miles



The trail in Stanton

Segment C - Edmore Area to Riverdale Area



Segment D - Riverdale to Alma

