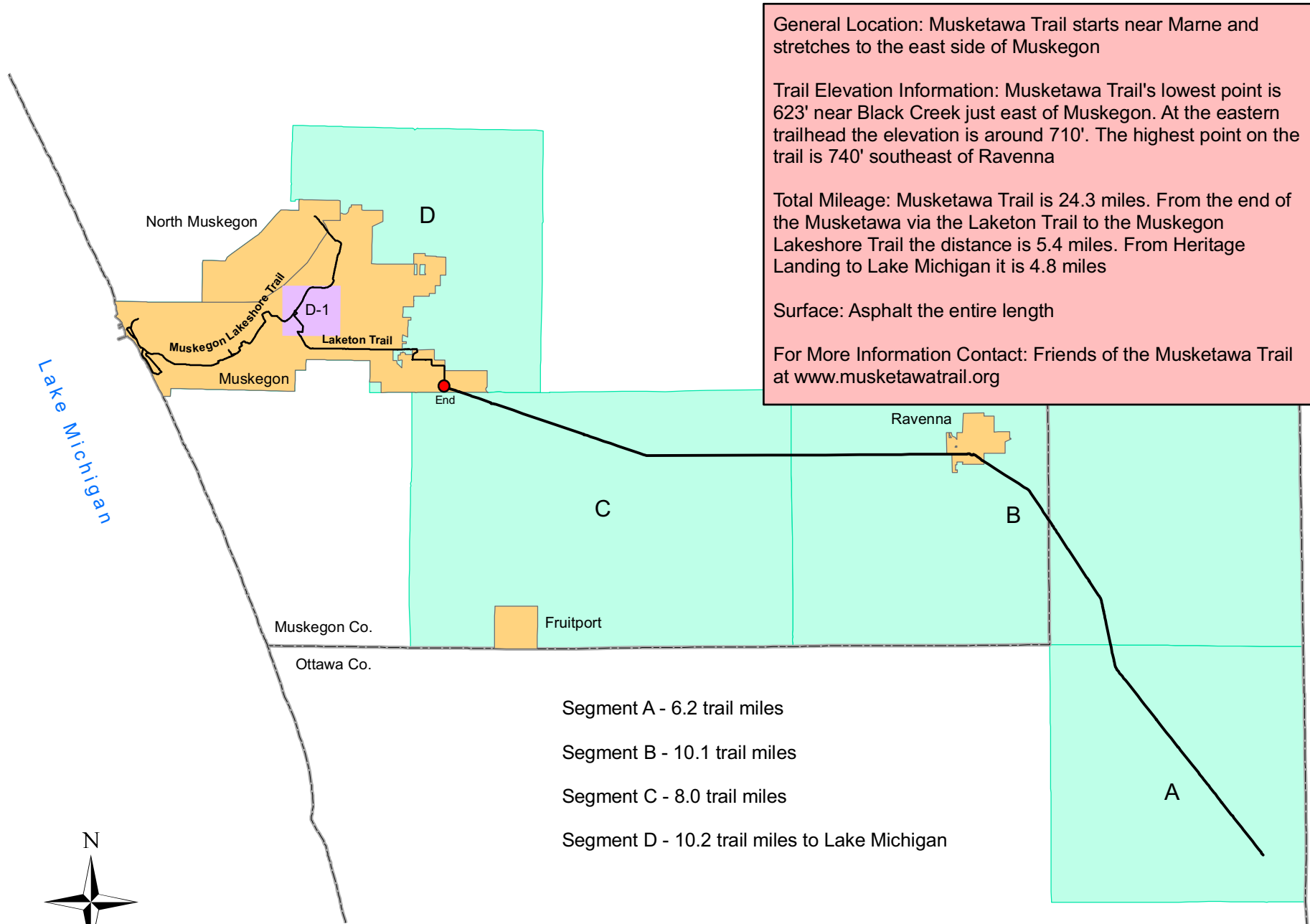
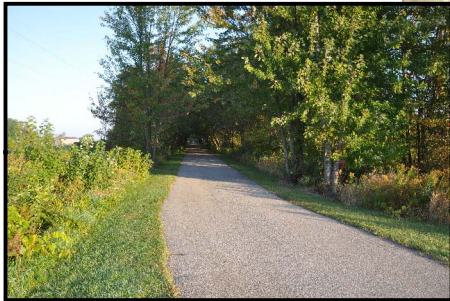
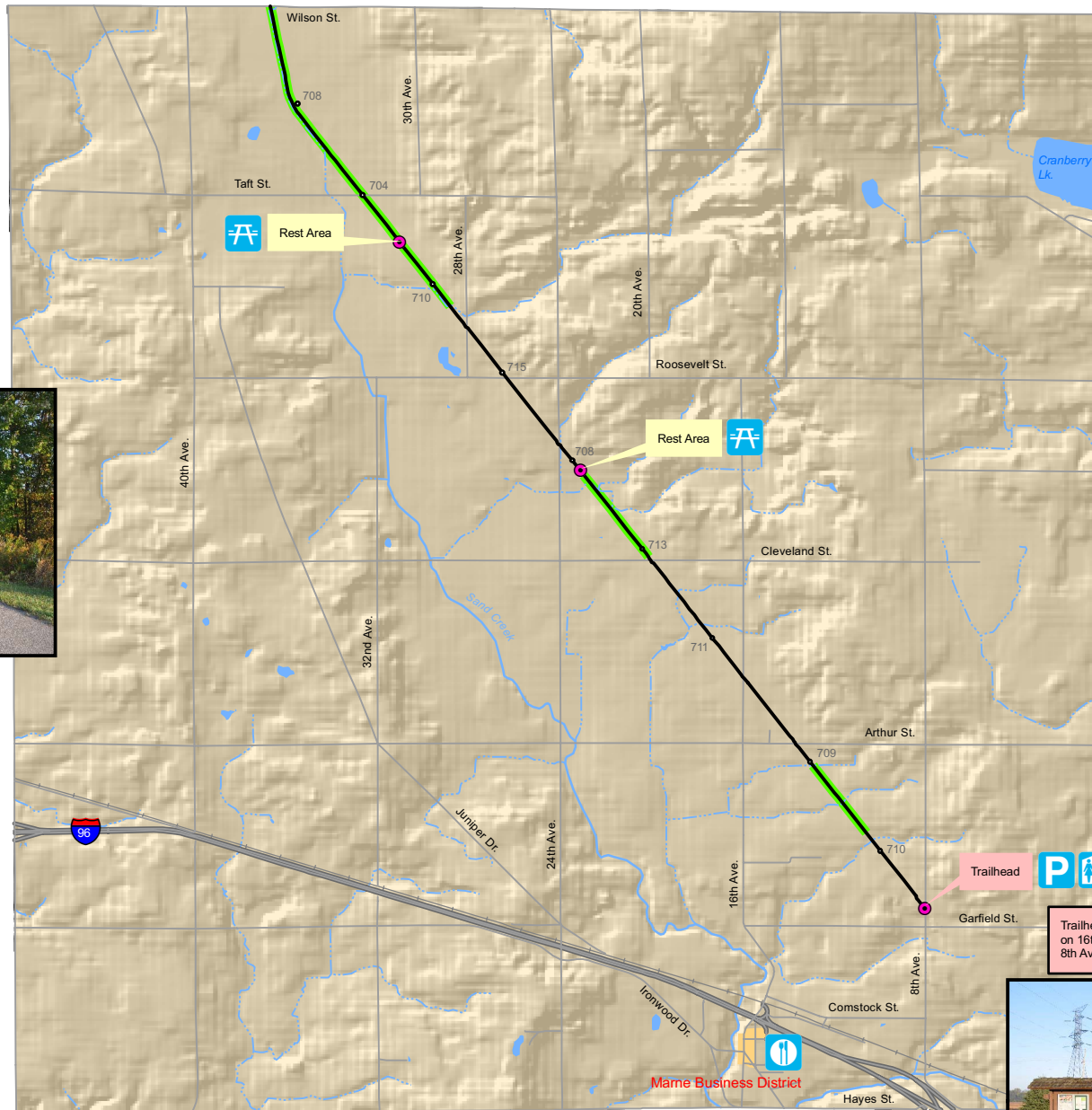


Musketawa Trail - Information and Index Map



Segment A - Marne Area to Conklin Area

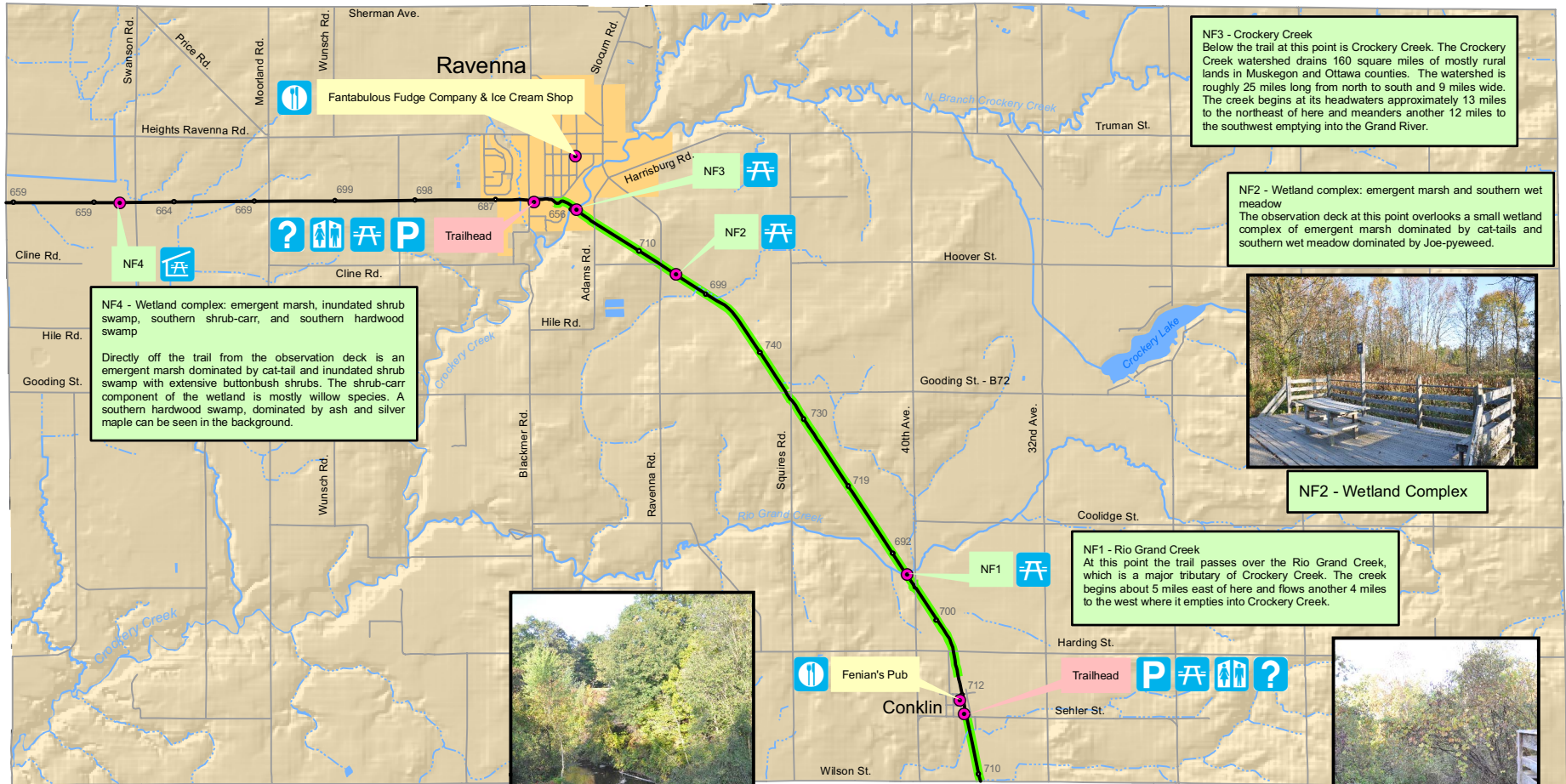


Trail at Cleveland St.

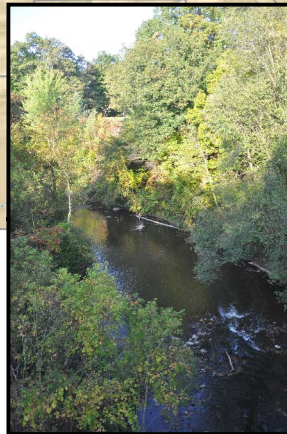


Trailhead at 8th Ave.

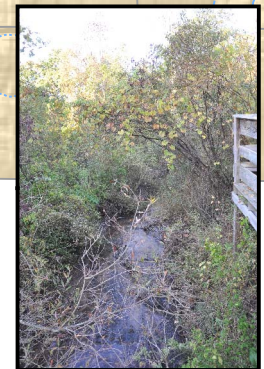
Segment B - Conklin Area to Ravenna Area



NF2 - Wetland Complex



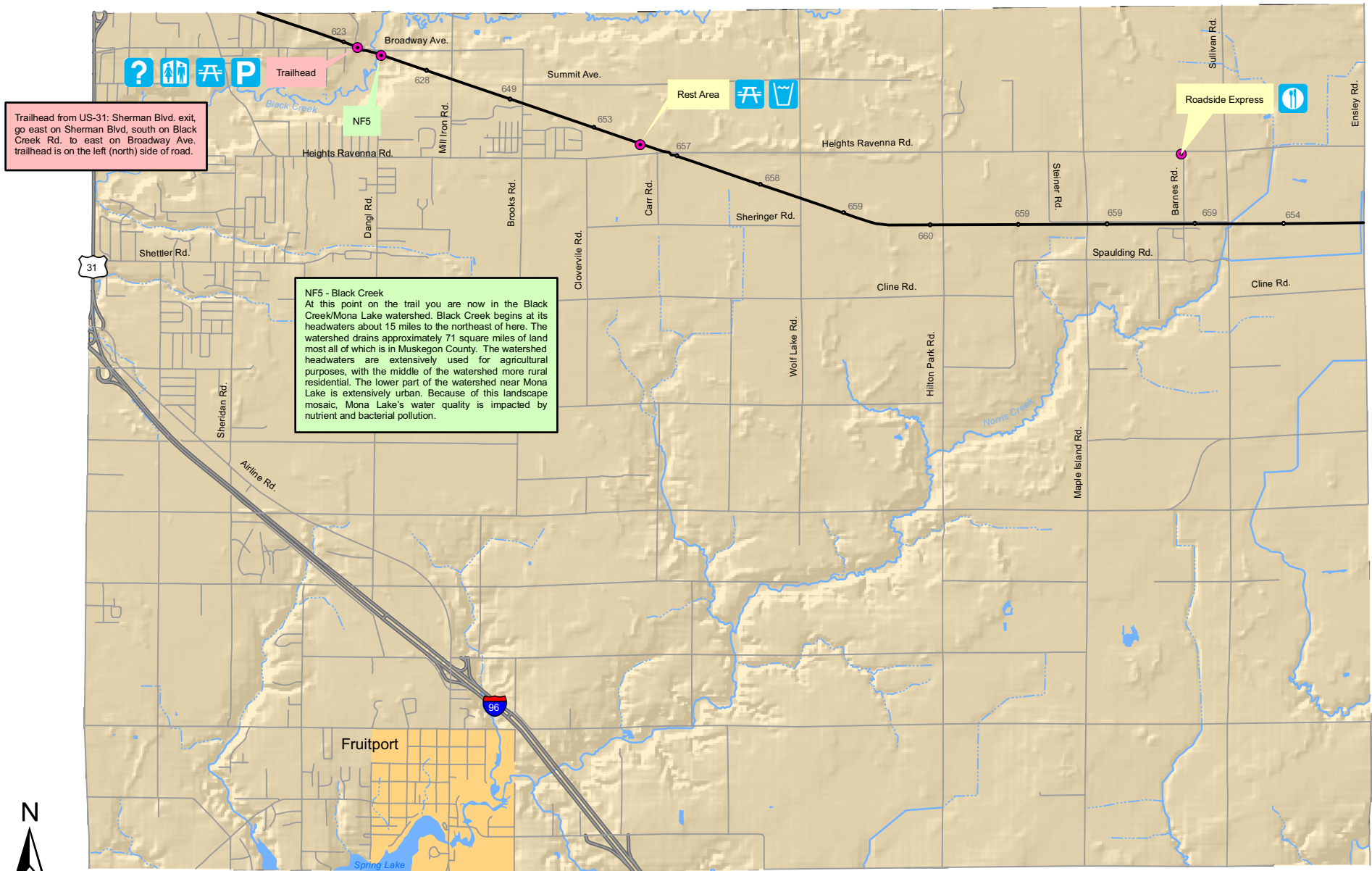
NF3 - Crockery Creek



NF1 - Rio Grand Creek



Segment C - Ravenna Area to Muskegon Area



Segment D - Muskegon Area Trails

NF6 - Common reed invasion
 Along the shoreline of Muskegon Lake you will notice the Common Reed (*Phragmites australis*). The non-native species you see here is a very aggressive plant. It reproduces by seeds and by a spreading rhizome root system. Because of this, the plant can crowd out native emergent plant species that provide wildlife habitat.



Common Reed

Photo by: J.M. Swaingett, USDI National Park Service, BigSaw.org

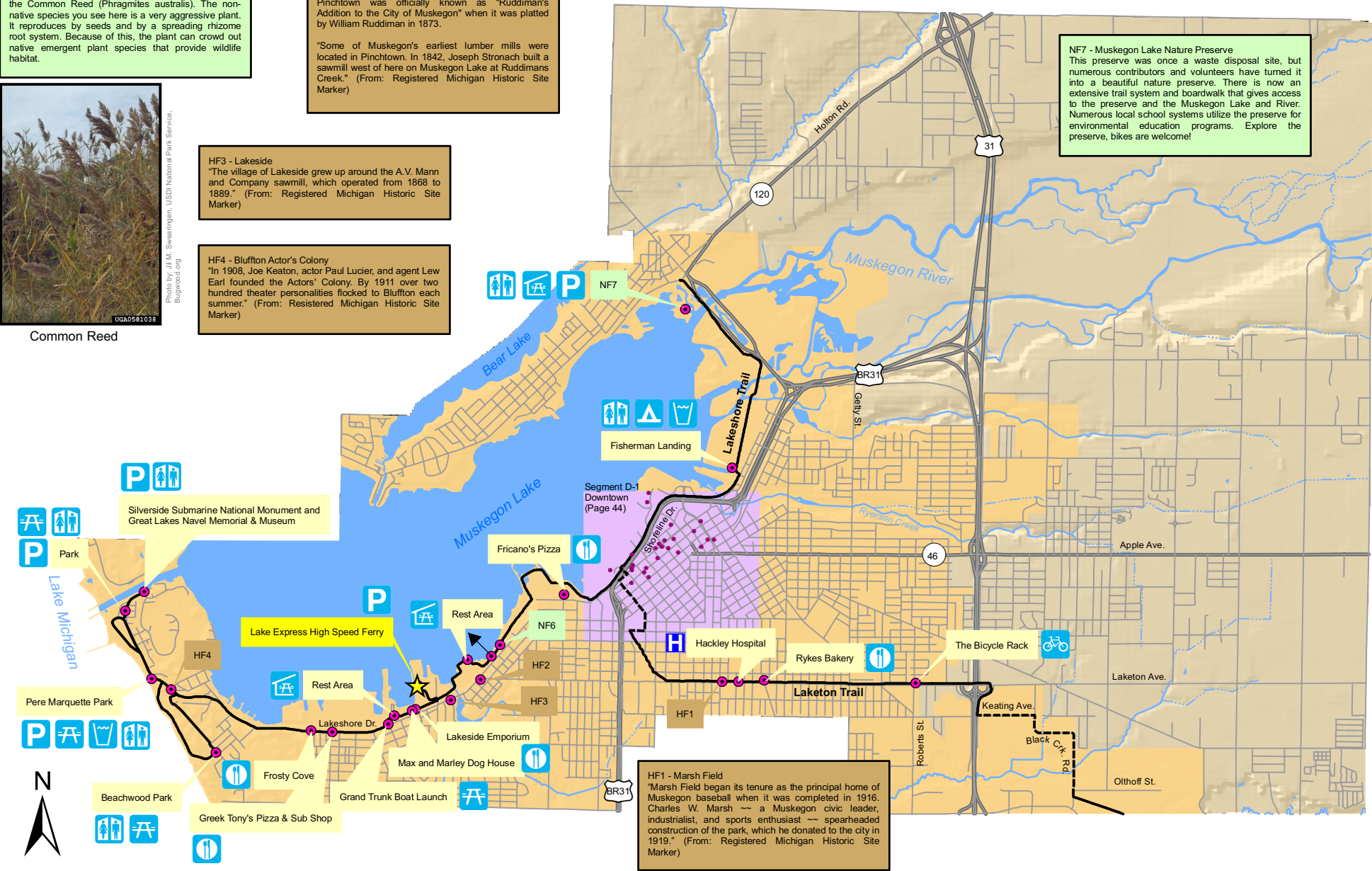
HF2 - Pinchtown
 Pinchtown was officially known as "Ruddiman's Addition to the City of Muskegon" when it was plotted by William Ruddiman in 1873.

"Some of Muskegon's earliest lumber mills were located in Pinchtown. In 1842, Joseph Stronach built a sawmill west of here on Muskegon Lake at Ruddiman's Creek." (From: Registered Michigan Historic Site Marker)

HF3 - Lakeside
 "The village of Lakeside grew up around the A.V. Mann and Company sawmill, which operated from 1868 to 1889." (From: Registered Michigan Historic Site Marker)

HF4 - Bluffton Actor's Colony
 "In 1908, Joe Keaton, actor Paul Lucier, and agent Lew Earl founded the Actors' Colony. By 1911 over two hundred theater personalities flocked to Bluffton each summer." (From: Registered Michigan Historic Site Marker)

NF7 - Muskegon Lake Nature Preserve
 This preserve was once a waste disposal site, but numerous contributors and volunteers have turned it into a beautiful nature preserve. There is now an extensive trail system and boardwalk that gives access to the preserve and the Muskegon Lake and River. Numerous local school systems utilize the preserve for environmental education programs. Explore the preserve, bikes are welcome!



HF1 - Marsh Field
 "Marsh Field began its tenure as the principal home of Muskegon baseball when it was completed in 1916. Charles W. Marsh -- a Muskegon civic leader, industrialist, and sports enthusiast -- spearheaded construction of the park, which he donated to the city in 1919." (From: Registered Michigan Historic Site Marker)



Segment D-1 Downtown Muskegon Trails

9) Hackley House
 "This three-story wood-frame building is one of Michigan's most splendid examples of Queen Anne architecture."

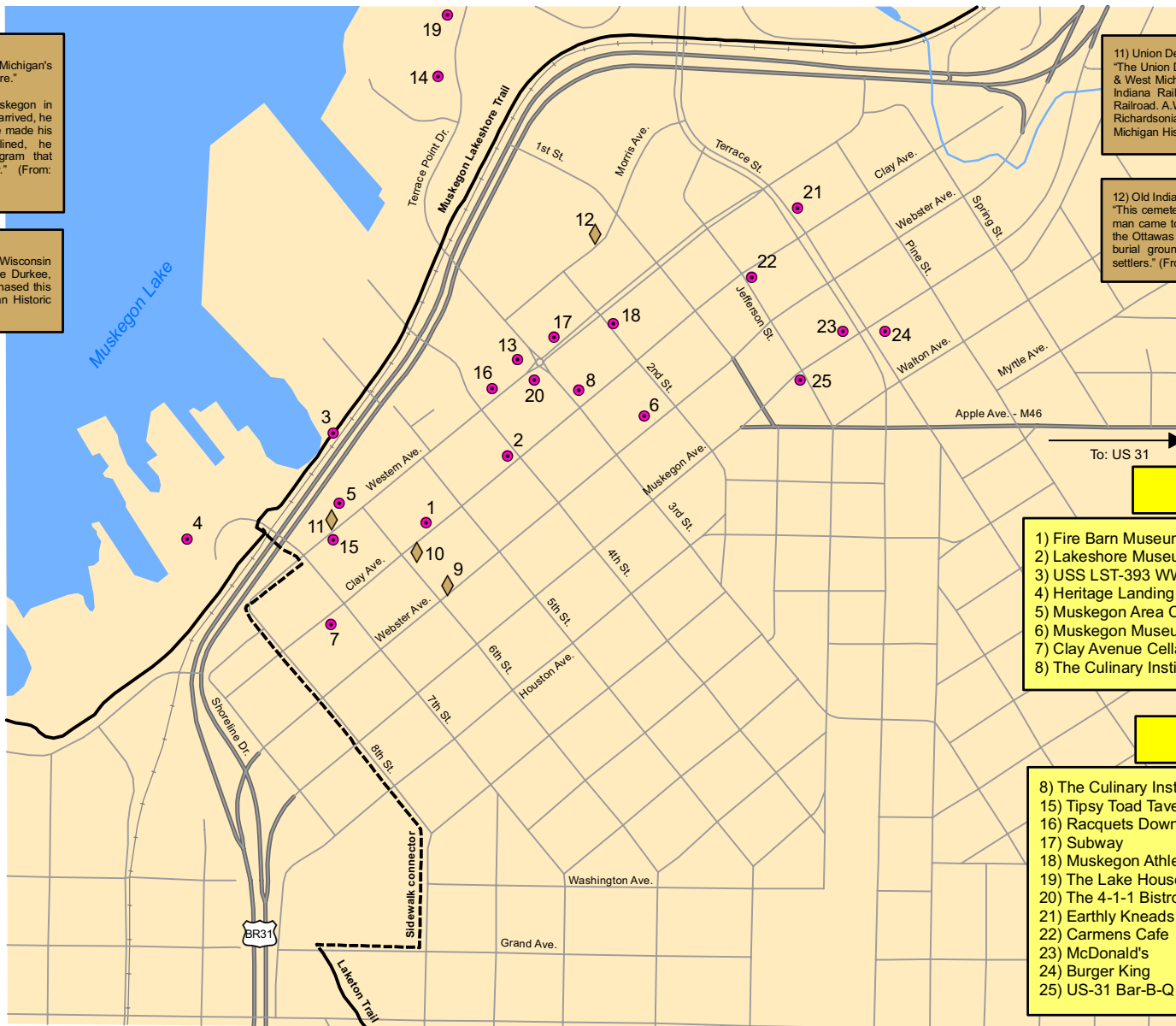
"Charles H. Hackley (1837-1905) came to Muskegon in 1857. Though he had only seven dollars when he arrived, he was worth \$12 million at the time of his death. He made his fortune in lumber, and when lumber declined, he administered the Chamber of Commerce program that rebuilt Muskegon into a center of industry." (From: Registered Michigan Historic Site Marker)

10) Hackley-Holt House

"In 1859 Joseph Hackley came to Michigan from Wisconsin to serve as superintendent of construction for the Durkee, Truesdell and Company sawmill. In 1860 he purchased this house, built in 1857." (From: Registered Michigan Historic Site Marker)

11) Union Depot
 "The Union Depot was opened in 1895 to serve the Chicago & West Michigan Railway; The Muskegon, Grand Rapids & Indiana Railroad; and the Toledo, Saginaw & Muskegon Railroad. A.W. Rush and Son of Grand Rapids designed the Richardsonian Romanesque station." (From: Registered Michigan Historic Site Marker)

12) Old Indian Cemetery
 "This cemetery was already established when the first white man came to this area. It is believed to have been used by the Ottawas as early as 1750 and is known to have been a burial ground from 1806 to 1854 for both Indians and settlers." (From: Registered Michigan Historic Site Marker)



Attractions

- 1) Fire Barn Museum & Scolnik House
- 2) Lakeshore Museum Center
- 3) USS LST-393 WWII Ship
- 4) Heritage Landing
- 5) Muskegon Area Chamber of Commerce
- 6) Muskegon Museum of Art
- 7) Clay Avenue Cellars
- 8) The Culinary Institute of Michigan - Baker College

Restaurants

- 8) The Culinary Institute of Michigan
- 15) Topsy Toad Tavern
- 16) Racquets Downtown Grill
- 17) Subway
- 18) Muskegon Athletic Club Restaurant
- 19) The Lake House Waterfront Grille
- 20) The 4-1-1 Bistro Lounge
- 21) Earthly Kneads Bakery & The Cheese Lady
- 22) Carmens Cafe
- 23) McDonald's
- 24) Burger King
- 25) US-31 Bar-B-Q