

Fred Meijer Standale Trail

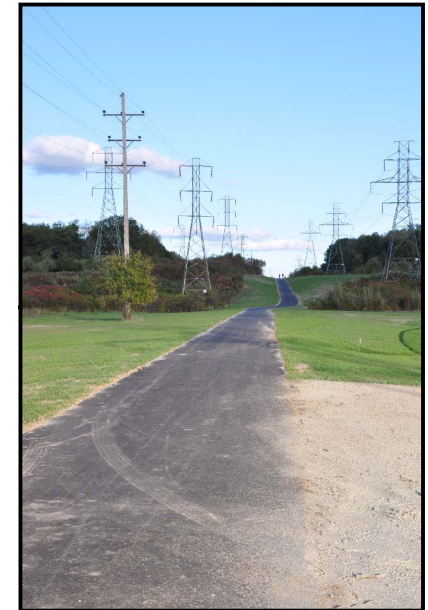
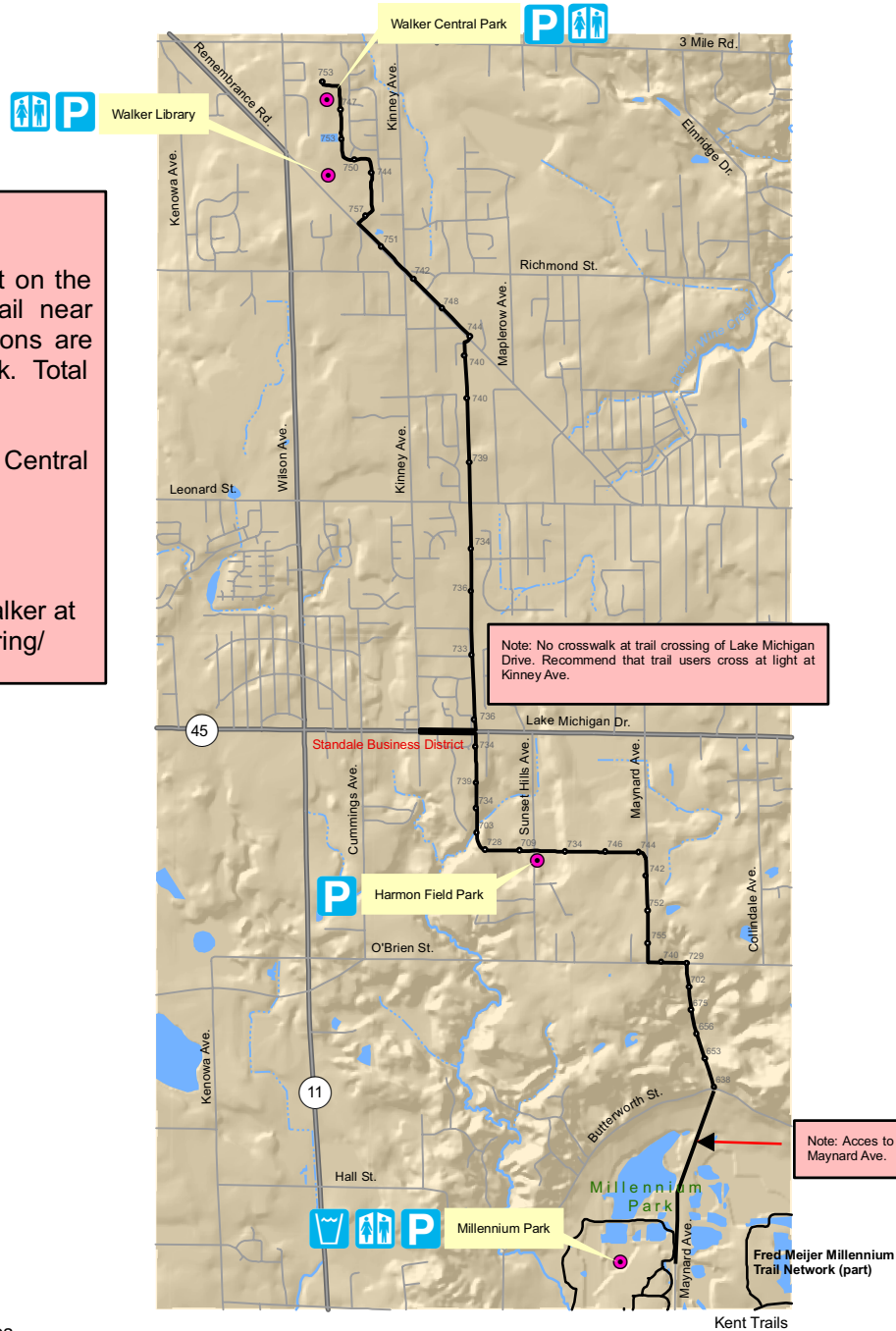
General Location: City of Walker

Trail Elevation Information: Lowest point on the trail is at the southern end of the trail near Butterworth St. at 638'. Highest elevations are around 757' near Walker Central Park. Total elevation change is 119'

Total Mileage: 5.5 miles from Walker Central Park to Butterworth St.

Surface: Asphalt the entire length

For More Information Contact: City of Walker at <http://walker.mi.us/departments/Engineering/>



Trail crossing at Sunset Hills Ave.

